

# Installation instructions for Peikko Designer®

Follow these steps to successfully install Peikko Designer® on your computer:

1. You will find **Software and components** page at <http://www.peikko.com/software>
2. Begin installation by clicking **Download Peikko Designer®** from the **Tools for Designers** box.

The screenshot shows the Peikko website's 'Software and Components' page. At the top, there is a logo for Peikko Group, a search bar, and a dropdown menu for 'Peikko Websites'. Below the logo is a navigation menu with links for PRODUCTS, REFERENCES, ABOUT PEIKKO, NEWS, EVENTS, MEDIA, and CONTACT US. The main heading is 'SOFTWARE AND COMPONENTS'. On the left, there is a sidebar with a list of categories: Peikko Designer®, DELTABEAM Design Tools, 2D and 3D modeling tools, User Instructions, Installation Instructions, Other software, and Software downloads. The main content area features a large image of software boxes and a section titled 'TOOLS FOR DESIGNERS'. This section includes a description: 'Tools for Designers is Peikko's toolbox for structural designers to make their work faster, easier and more reliable. The toolbox includes design software, 3D components for modeling programs and Technical Manuals of Peikko's products. To be able to support designers' needs all tools are developed constantly.' Below the description is a button that says 'Download PEIKKO DESIGNERS'. A callout box on the right side of the page highlights this button, with a hand cursor pointing to it. The callout box also contains the text 'TOOLS FOR DESIGNERS' and 'Peikko offers free software tools and design components to make designing faster and easier.' along with a 'Go to software download center' button and social media sharing icons.

3. Peikko Designer® Installation window will open. Fill in fields
  - a. for first-time installation. Password will be sent to your e-mail after registration.
  - b. for additional installation. Sign in if you already have Peikko Designer® password.
  - c. if you forgot your password. Your password will be sent to your e-mail.



## PEIKKO DESIGNER® INSTALLATION.

FOR FIRST-TIME INSTALLATION

**a.**



- 
- 
- 
- 
- 


- Select your country - v

1 + 3 =

I accept the [agreement](#)

FOR ADDITIONAL INSTALLATION

**b.**



- 
-

**c.**

Forgot your password?

Password will be sent to your e-mail after registration

4. Peikko Designer® window will open. Click either **Install Peikko Designer®** or **Install prerequisites + Peikko Designer®** at the bottom of the page.

# PEIKKO DESIGNER® INSTALLATION.



**Name:** Peikko Designer ®

**Version:** 1.0.2.40

**Publisher:** Enterprixe Software Ltd

The following prerequisites are required:

- Windows Installer 3.1
- .NET Framework 4.0.

**NOTE:** Installing prerequisites requires administrator rights. Contact your administrator if you do not have administrator rights in your computer.

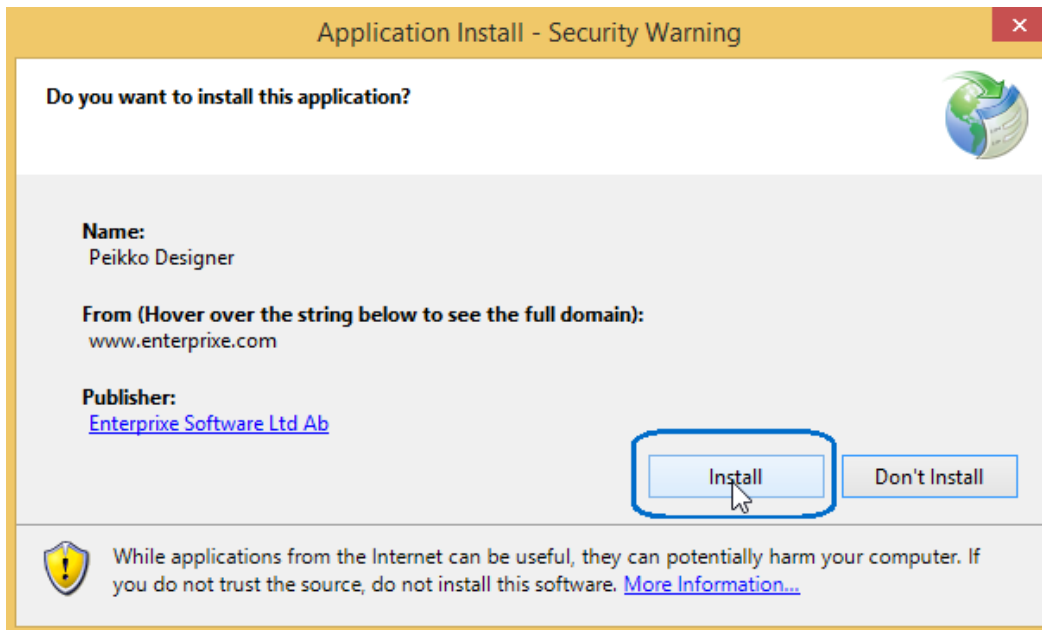
If you are sure about all prerequisites please click 'Install Peikko Designer®' button. Otherwise, click the 'Install prerequisites+Peikko Designer®' button.

[Install Peikko Designer®](#)      [Install prerequisites+Peikko Designer®](#)

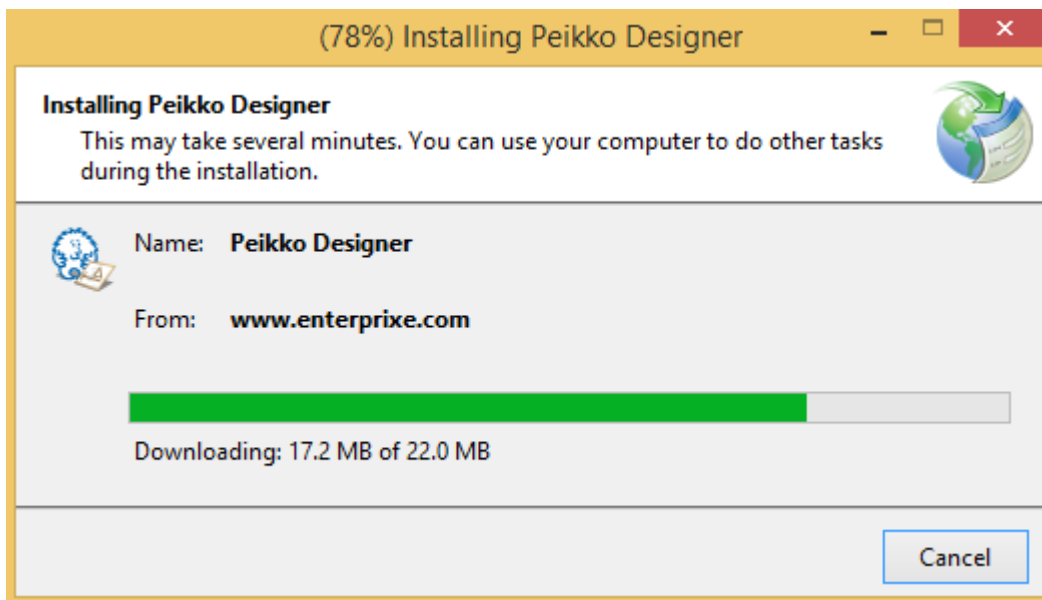
---

Powered by Enterprixe Software Ltd

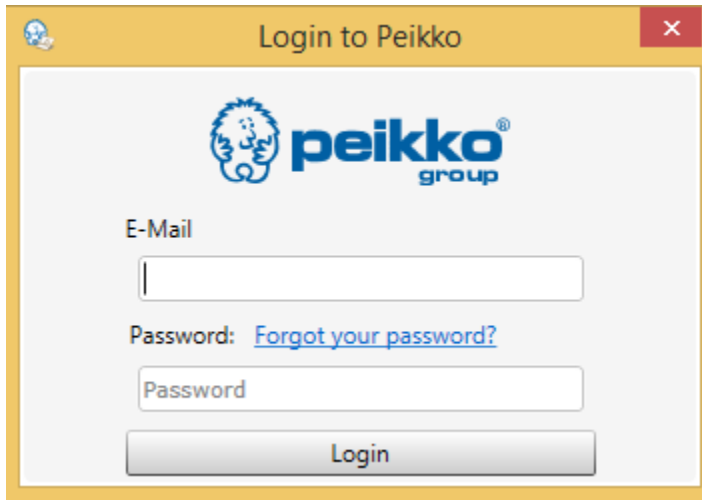
5. Security Warning window may appear. Click **Install** to continue.



6. The installation may take a few moments.



7. After installation is complete a Login to Peikko window will open. **Login** using your E-mail and password.



8. Peikko Designer® is now ready to use.

