



# COLIFT MOUNTING SYSTEM

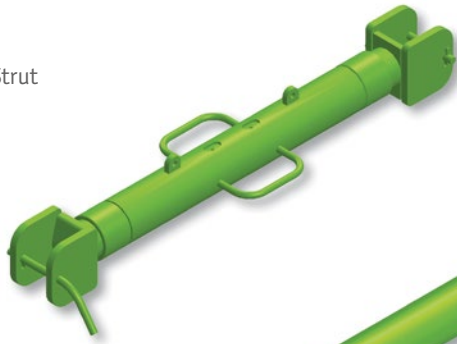
## FOR PRECAST ELEMENTS

Designed for easy and time-saving mounting, lifting, moving, and placing of rod-shaped precast concrete elements.

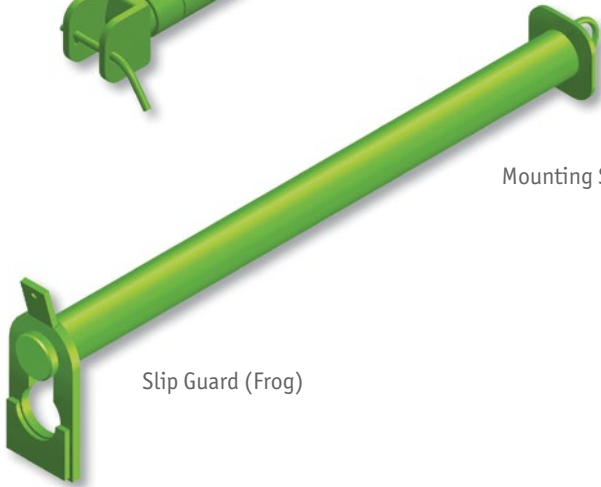
- Standardized mounting system for many load levels
  - 5.6 – 35.5 tons with 30 cm corbel
  - 15.8 – 90 tons without corbels
- Complete system
- Minimum need for maintenance
- CE-marked, manufactured under strict quality control



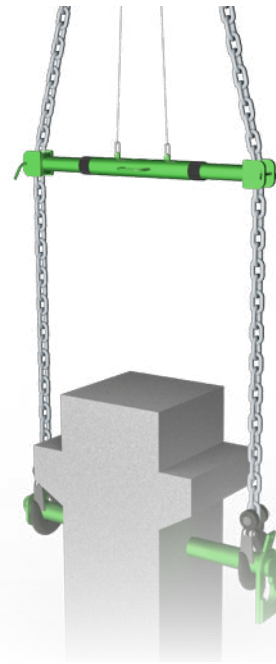
Rope Strut



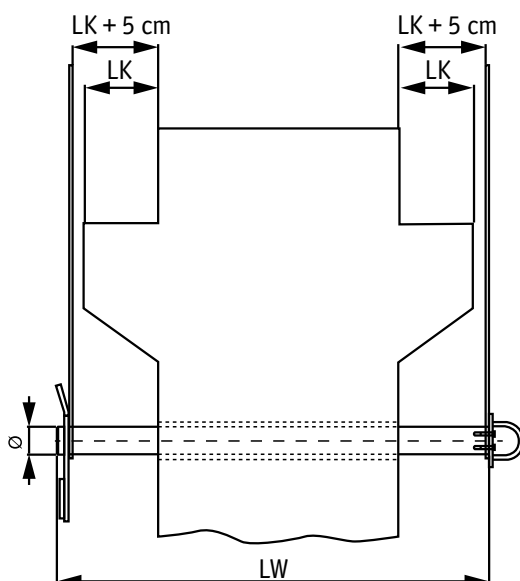
Mounting Shaft



Slip Guard (Frog)



- The COLIFT Mounting System consists of a mounting shaft with a slip guard and a rope strut.
- By attaching a releasing cord to the slip frog the System can be remotely released after securing the element in its right position.
- Note: related lifting slings, wires, and cords are not a part of the COLIFT Mounting System delivery.



### COLIFT Mounting Shaft

Corbel length LK [cm]	max. load capacity [t] mounting shaft	WLL <sub>min</sub> [t] for each lifting point
Type [mm]	Length [mm]	Weight [kg]
<b>Ø 70</b>	<b>1200</b>	<b>45</b>
none	15,8	7,9
20	7,0	3,5
25	6,3	3,15
30	5,8	2,9
<b>Ø 90</b>	<b>1400</b>	<b>82</b>
none	44,0	22,0
20	18,0	9,0
25	15,5	7,25
30	12,5	6,25
<b>Ø 115</b>	<b>1800</b>	<b>168</b>
none	68,0	34,0
20	30,0	15,0
25	26,0	13,0
30	24,0	12,0
<b>Ø 140</b>	<b>2000</b>	<b>270</b>
none	120,0	60,0
20	57,0	28,5
25	51,0	25,5
30	42,0	21,0

### COLIFT Rope Strut

Type	Strut width [mm]	Weight [kg]	Permissible angle of inclination
<b>PS 01</b>	1125 – 1800	80	$\beta \leq 15^\circ$
<b>PS 02</b>	825 – 1200	65	$\beta \leq 15^\circ$
<b>PS 03</b>	625 – 900	60	$\beta \leq 15^\circ$

[www.peikko.com](http://www.peikko.com)