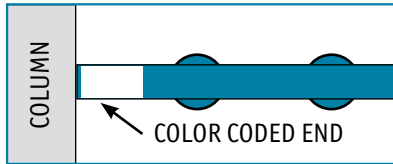
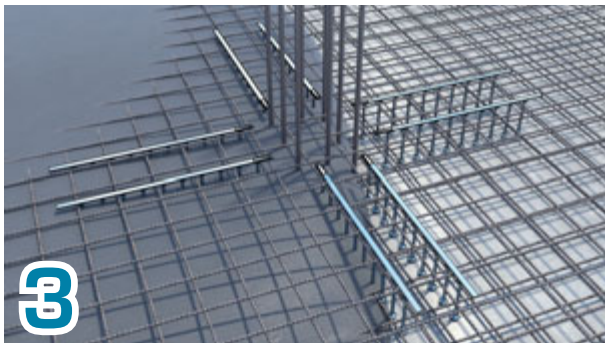
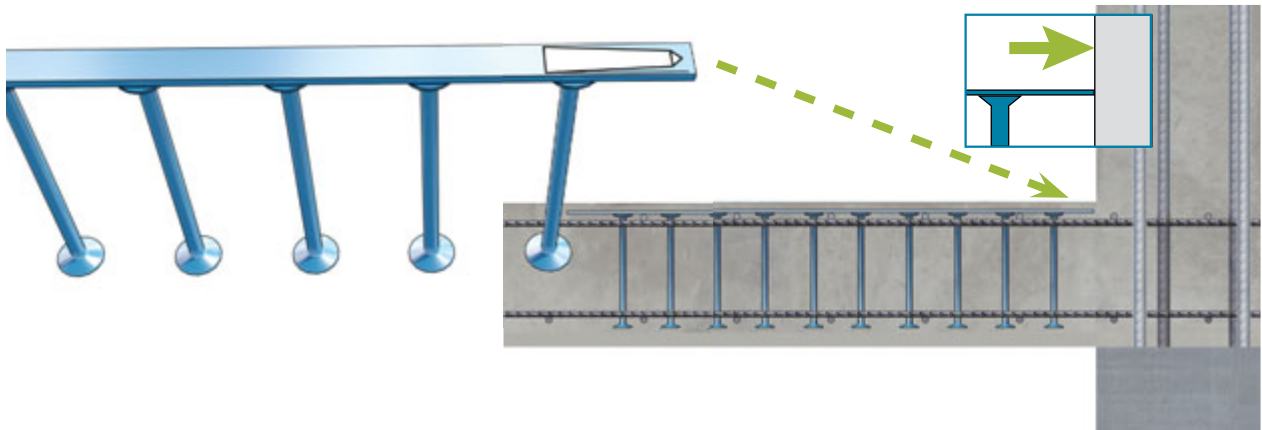
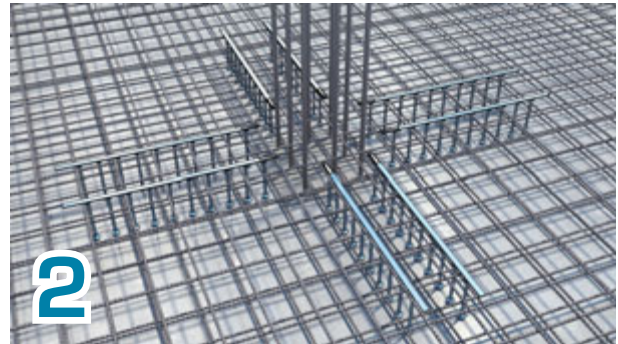
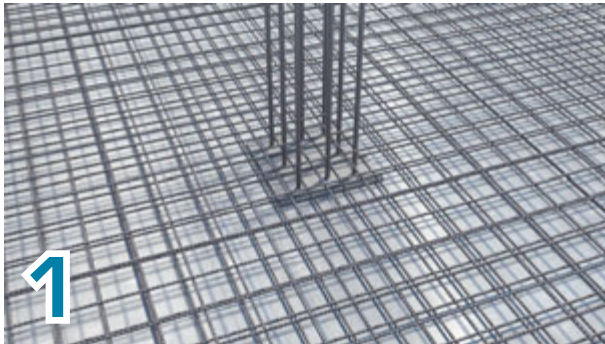


## Install DSA

DSA Rail is installed in the slab according to the design plans. Each DSA Rail is identified by a color code located at the end of the rail. The color code is determined by the number of Rail configurations for each column for a specific project. Example: SR-1 is red and SR-2 is blue.



- Top installation: The DSA Rail is placed on top of the main reinforcement of the slab. All bending reinforcement is installed prior to the DSA Rail.



- **Bottom installation:** DSA Rail is placed below the main reinforcement of the slab prior to the installation of the bending reinforcement. In order to achieve a sufficient concrete cover of the headed studs, plastic spacers are mounted to the DSA Rail. Spacers are ordered separately.

